

Hesperiidae family

Large Brown Skipper

*Motasingha trimaculata trimaculata***Also known as:**

Dingy Four-spot Sedge-skipper

Abundance in Adelaide area: Rare**Flight:** Nov – mid Dec**Wingspan:** m 33 mm; f 36 mm**Mature larva length:** 35 mm

Now very rare in the Hills, this species is only known to occur in a few conservation areas, especially in the vicinity of Scott Creek and Mt. Bold. This Skipper prefers heath-lands with an abundance of its caterpillar food plant, Sticky Sword-sedge. The regeneration of its food plants, especially in these areas, should be encouraged.

Caterpillar food plants: Sword-sedges. The caterpillars eat the leaves.

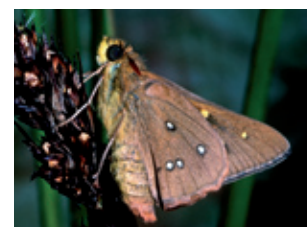
Adelaide native species: Sticky Sword-sedge (*Lepidosperma viscidum*), Black Rapier-sedge (*Lepidosperma carphoides*).

This large Skipper is known to still occur in the Mount Bold and southern Fleurieu areas. It is a butterfly of coastal or sub-coastal heath and mallee lands and flies in late spring. The adults may be noted flitting between flowers in the bush areas where it still exists.

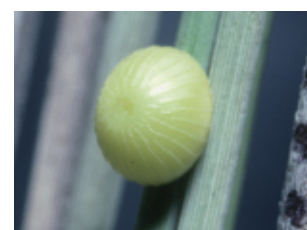
In the Adelaide region its caterpillar food plant is the Sticky Sword-sedge (*Lepidosperma viscidum*), a common sedge found widely in the southern portions of the state.



The colour of the butterfly is a mid-brown with a slight yellow suffusion on the upper side. The male has a series of three, pale yellow, small spots on the outer portion of the forewing, while the female has a series of much larger spots in these positions.



The underside of the forewing is light red-brown, with cream patches in similar places to the forewing, though in the male these patches are much larger. The hind wing is also a light red-brown, with four white, cantered, black spots on it.



The mature caterpillars inhabit a tubular shelter at the base of its food plant. It is mustard yellow-green in colour, with a rosy collar just behind the head capsule. The cylindrical pupa is brown and is formed in the shelter.

